
Using ProtoFrames

ProtoFrames are strong aluminum frames that form the foundation for ProtoCell circuit designs that can use an open-frame construction.

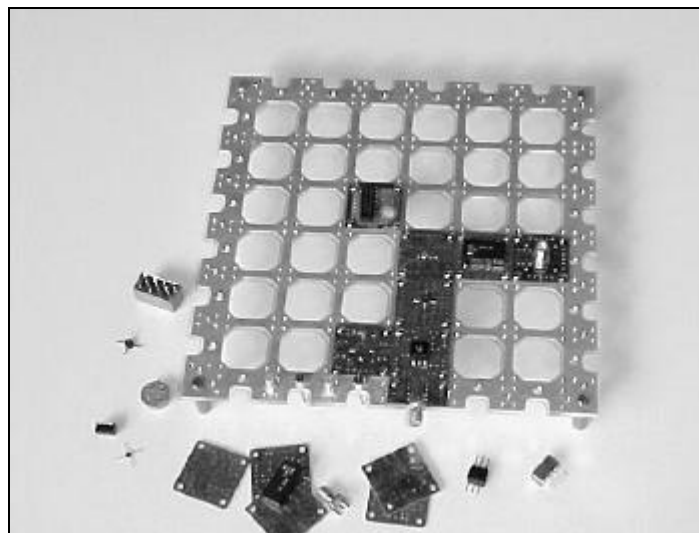
The FR-266 is a precision, machined 1/8" thick plate that holds up to 36 circuit board cells. Plus, the complete periphery will accommodate CB-025 connector boards for convenient end launching. Four corner holes are provided for attaching standoffs or other mounting brackets. Multiple threaded holes for filtered feedthrus and ground terminals are located on all four sides of the frame.

Once the circuit board cells are mounted on the ProtoFrame, simply flip the frame over for access to DC bias and control circuit wiring. Analog and digital circuitry can be added to produce a fully functional sub-system in one compact package.

The large area frame is capable of supporting multiple small prototype circuits that can function independently, or easily interconnect. This eliminates the need for separate frames or additional external breadboards, which further reduces the cost of the ProtoCell system.

In an age of rapid turn-around and cost-conscious development constraints, ProtoCell open frames offers ideal solutions that allows the designer to use production components without the time and cost of custom circuit boards or poor performance of hand-wired brass boards.

ProtoCell is an ideal way to build custom RF circuits to be used in one-of-a-kind applications such as special test equipment or production test fixtures. The rugged design of ProtoCell will provide long service life, plus the added advantage that allows the circuit to be easily modified for changing applications.



FR-266

ProtoFrames are fast, flexible, and versatile!



FR-266 ProtoFrame

The FR-266 ProtoFrame offers greater versatility for RF circuits that can use an open frame construction. Made from precision-machined 0.125" thick aluminum plate, the FR-266 offers an extremely low profile, yet is extraordinarily strong.

Convenient 4-40 corner mounting holes allow the FR-266 to be mounted on standoffs. Threaded holes for filter feedthrus and ground

terminals line the periphery of the frame for easily accessible power and signal connections.

The FR-266 has 24 edge positions that will accommodate CB-025 RF connector circuit boards. These positions provide greater versatility for straight or right angle end-launch RF connectors without using any of the 36 available ProtoCell sites for components.

